



**\$300
PRIZE**

Visión y Compromiso™

23rd ANNUAL CONFERENCE

*“Building resistance,
sowing hope, and harvesting
community power.”*

CALL FOR ARTWORK

• SHOWCASE YOUR TALENT •

**DEADLINE
JUNE 2
2025**

vyconference.org

We invite promotora artists to submit their original art in any medium for consideration to be featured in our conference marketing materials.

Selected artwork will be the main image for the conference and become part of Visión y Compromiso’s historical print collection, which is showcased at every national conference.

This opportunity will uplift the visibility and recognition for your artistic contributions in our community.

GUIDELINES FOR ARTWORK ENTRIES

Along with your art entry, you must complete and send this page and the participation form.

- ☐ **Submission Deadline:** All entries must be submitted by **JUNE 2, 2025**.
- ☐ **Format:** Art entries must be sent digitally via email to ana@visionycompromiso.org
- ☐ **Image Quality:** Digital images/photos must be high resolution (minimum of 300 dpi).
AI-generated entries will not be accepted.
- ☐ **Originality:** All artwork must be original and never previously published.
- ☐ **Number of Entries:** Participants may submit as many designs as they wish.
- ☐ **Rights Granted:** By submitting your artwork, you grant Visión y Compromiso the rights to use your entry at its discretion. This applies to any and all entries submitted, both selected and non-selected designs.
- ☐ **Eligibility:** The contest is open to all promotoras and community health workers, as well as their family members, friends, and acquaintances. If you are not a promotora or community health worker, you must be referred by one.
- ☐ **Selection:** The selected entry will be chosen by a committee composed of members from the conference's planning committee, staff from Visión y Compromiso, and special invitees with expertise in art and design.
- ☐ **Liability:** Visión y Compromiso and the conference's organizing committee are not responsible for lost or damaged materials or for submissions sent to an incorrect address or person.
- ☐ **Recognition:** The artist of the selected entry will receive a recognition of \$300.
- ☐ **Commercial Use:** The artist of the selected entry may not reproduce the design for commercial purposes without prior authorization from Visión y Compromiso.

I CERTIFY THAT I HAVE READ, UNDERSTOOD, AND ACCEPTED THE GUIDELINES.

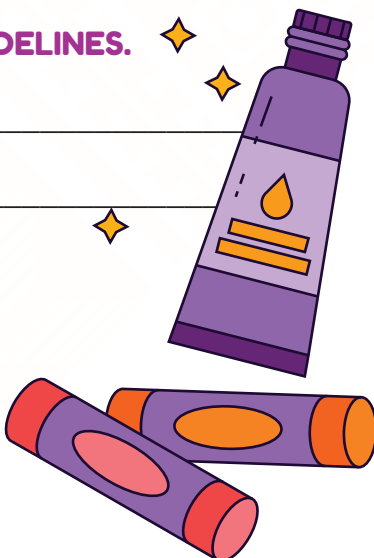
Signature: _____

Name (please print): _____

Date: ____/____/____

QUESTIONS OR CONCERNS? PLEASE CONTACT:

Ana Velazquez: 213-613-1970 • ana@visionycompromiso.org or
Jessica Charria: 818.856.5790 • jcharria@visionycompromiso.org



PARTICIPATION FORM

Name: _____

Address: _____

Phone: _____

Email: _____

Are you a promotora or community health worker (CHW)? ☐ Yes ☐ No

If no, please include the name of the promotora or CHW who invited you to participate:

Please describe how the art entry represents the voice, the work, the spirit, and the heart of promotoras through this year's conference theme: **"Building resistance, sowing hope, and harvesting community power."**